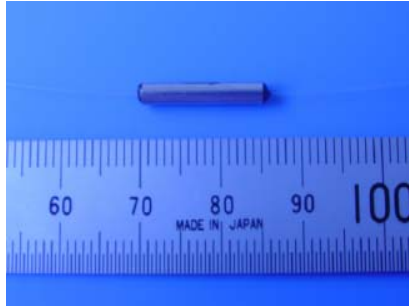




### Specification of S-type Miniature Isolator



#### Parameter

		Single Stage
Insertion Loss (1550nm, 23°C), dB	Typical	0.30
Insertion Loss ( $1550 \pm 15/20\text{nm}^*$ , 23°C), dB	Max.	0.35
Insertion Loss ( $1550 \pm 15/20\text{nm}^*$ , -5°C to 75°C), dB	Max.	0.45
Polarization dependent loss (PDL), dB ( $\lambda_c \pm 20\text{nm}$ , -5 to 75°C)	Max.	0.06
Isolation ( $\lambda_c \pm 15/20\text{nm}^*$ , 23°C), dB	Min.	30
Isolation ( $\lambda_c \pm 15/20\text{nm}^*$ , -5 to 75°C), dB	Min.	20
Return loss, 23°C, dB	Min.	55/55
Polarization mode dispersion (PMD), ps	Max.	0.02
Optical power handling, mW		1000
Operating temperature, °C		-5 to 70
Storage temperature, °C		-40 to 85
Tensile load		5N
Package dimensions $\Phi \times L$ , mm		2.5 x 15
Qualification: compliance with Telcodia		<a href="#">GR-1209-CORE &amp; GR-1221-CORE</a>

202, Shangdi Technology Trade Building

Shangdi Dongli, Block 1, Building No.4

Haidian District, Beijing 100085, China

Tel: (86 10) 6297 6561 Fax: (86 10) 6297 3213