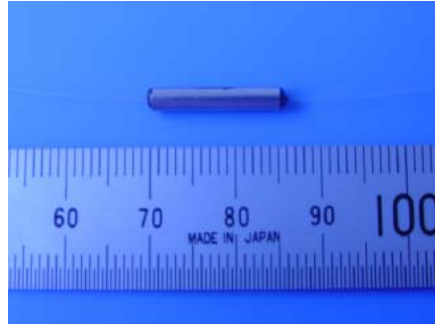




**Specification of P-type (dual-stage) Miniature Isolator**



<b>Parameter</b>		<b>Dual Stage</b>	
		<b>P</b>	<b>A</b>
Insertion Loss (1550nm, 23°C), dB	Typical	0.35	0.42
Insertion Loss (1550 ± 15/20nm*, 23°C), dB	Max.	0.40	0.52
Insertion Loss (1550 ± 15/20nm*, -5°C to 75°C), dB	Max.	0.45	0.52
Polarization dependent loss (PDL), dB ( $\lambda_c \pm 20\text{nm}$ , -5 to 75°C)	Max.	0.06	0.1
Isolation ( $\lambda_c \pm 15/20\text{nm}^*$ , 23°C), dB	Min.	50	46
Isolation ( $\lambda_c \pm 15/20\text{nm}^*$ , -5 to 75°C), dB	Min.	40	36
Return loss, 23°C, dB	Min.	55/55	
Polarization mode dispersion (PMD), ps	Max.	0.02	
Optical power handling, mW		1000	
Operating temperature, °C		-5 to 70	
Storage temperature, °C		-40 to 85	
Tensile load		5N	
Package dimensions $\Phi \times L$ , mm		2.5 x 17	
Qualification: compliance with Telcodia		<a href="#">GR-1209-CORE &amp; GR-1221-CORE</a>	

202, Shangdi Technology Trade Building

Shangdi Dongli, Block 1, Building No.4

Haidian District, Beijing 100085, China

Tel: (86 10) 6297 6561 Fax: (86 10) 6297 3213